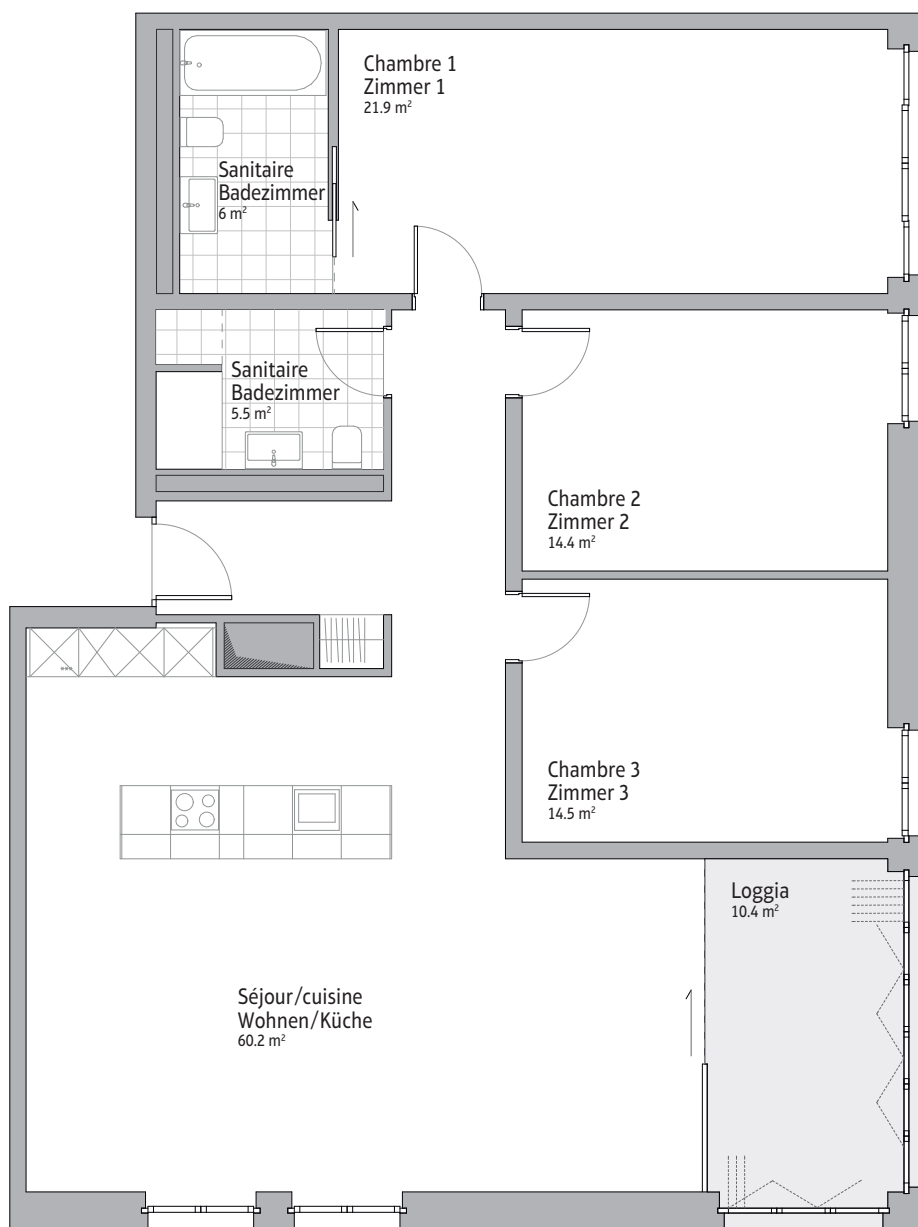


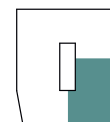
## APPARTEMENT DE 4,5 PIÈCES 4,5-ZIMMER-WOHNUNG



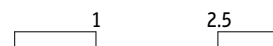
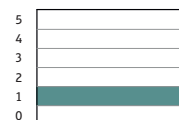
**Numéro d'appartement |  
Wohnung:**  
D1.2

**Surface totale |  
Total Fläche:** 122.5 m<sup>2</sup>

Appartement | Wohnung:



Etage | Stockwerk:



**Renseignements et location |  
Auskunft und Vermietung:**

**PGIMMOSERVICESA**

**PG Immoservice SA**

Rue Renfer 5, CH-2504 Biel/Bienne

Téléphone 032 322 11 88, info@pg-immoservice.ch

www.pg-immoservice.ch

Un projet de | Ein Projekt der

**ESPACE**  
REAL ESTATE

**WWW.ESPACE-BIRSE.CH**