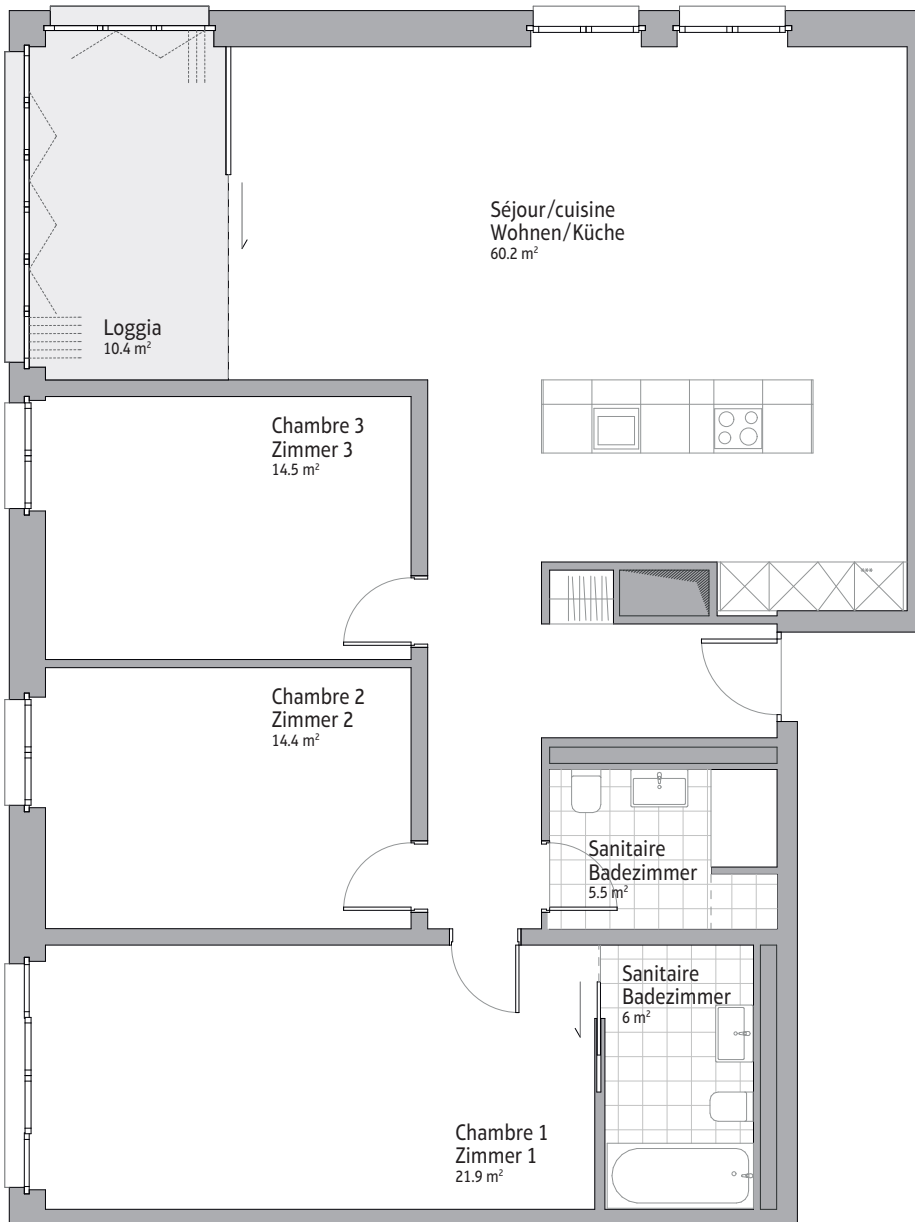


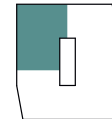
## APPARTEMENT DE 4,5 PIÈCES 4,5-ZIMMER-WOHNUNG



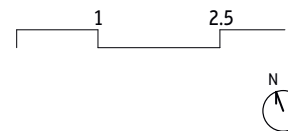
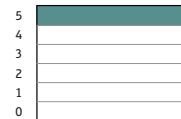
Numéro d'appartement |  
Wohnung:  
D5.4

Surface totale |  
Total Fläche: **122.5 m<sup>2</sup>**

Appartement | Wohnung:



Etage | Stockwerk:



Renseignements et location |  
Auskunft und Vermietung:

**PGIMMOSERVICESA**

PG Immoservice SA

Rue Renfer 5, CH-2504 Biel/Bienne

Téléphone 032 322 11 88, info@pg-immoservice.ch

www.pg-immoservice.ch

Un projet de | Ein Projekt der

**ESPACE**  
REAL ESTATE

**WWW.ESPACE-BIRSE.CH**